

# Renaissance

Issue 20  
October 2024



## PROJECT IS ON TRACK

Mr Yong Yih Ming  
Chief Operating Officer, IHH Healthcare Singapore  
Chief Executive Officer, Mount Elizabeth Hospital

Project  
Renaissance  
Newsletter

Dear Colleagues

In the past 6 months, we have transited to renovating our public fronting areas; Main Lobby, Medical Centre car porch and various common corridors. This is possible largely due to the completion of most of our new service corridors and lift cores, which allows us an alternate corridor while we modernise the older ones.

In this edition, I will provide updates on:

- (1) Progress of Ward Renovation (Wards 4D, 5D, 7, 8, 9 and 10, ICU 2, NICU, Delivery Suite)
- (2) Progress of Main Lobby
- (3) New Tenant at Medical Centre
- (4) Corridor Works & Temporary Arrangements



Mr Yong Yih Ming  
Chief Operating Officer, IHH Healthcare Singapore  
Chief Executive Officer, Mount Elizabeth Hospital

## TABLE OF CONTENTS

Introduction  
• P.1

Ward Progress  
• P.2

Grand Lobby Progress  
• P.3

New Tenant  
• P.4

Corridor Works  
• P.5-6

OCTOBER  
2024

# Wards Progress

*Wards 4D, 5D, 7, 8, 9 and 10,  
ICU 2, NICU, Delivery Suite*

The renovation of these assets is well on track, with the handover scheduled on December 2024 as originally planned.

This will bring back 109 beds and cots, including the 2 new Psychiatric rooms, in addition to our already operational Ward 5A and Endoscopy Suite.

We are providing some behind the hoarding previews of the progress and you would notice that the structures and finishes of these areas are generally in place already.





# GRAND LOBBY

# CONSTRUCTION

We had our get-together on 02 July 2024 before our Main Lobby was taken over for renovation. Works are progressing well and we look forward to welcoming our patients back again in April 2025. Our new lobby will also be renamed the **Grand Lobby** when launched, and will come with a finishing and layout that is befitting of its new name.

The Grand Lobby will also feature a new branding wall, and a reimagined car porch with a mesmerising skylight feature.

As you would have noticed, we have also temporarily relocated our Ming Dynasty vase. The Guan Gong mural is protected within the worksite under special conditions and will be preserved together with our authentic marble tiles.



Visit from Chairman



Future Grand Lobby

# New Tenant at Medical Centre



We welcomed a new tenant this month to Medical Centre. As updated previously, with the support of the MCST Council and authorities, we managed to convert some spaces to retail spaces to increase our retail offerings to our patients and community.

Let's welcome Crystal Hearing to Level 5 (#05-K1) of the medical centre and our ENTs and other doctors may find their service complementary to you.

Coming  
Soon

## INTERNATIONAL PATIENT SERVICE (IPS) CENTRE

The construction of our International Patient Service (IPS) center on Level 2 of the Mount Elizabeth Medical Centre is currently in progress, with an anticipated completion date set for November 2024

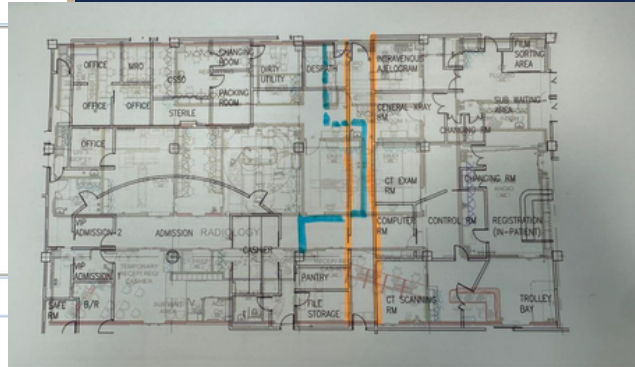
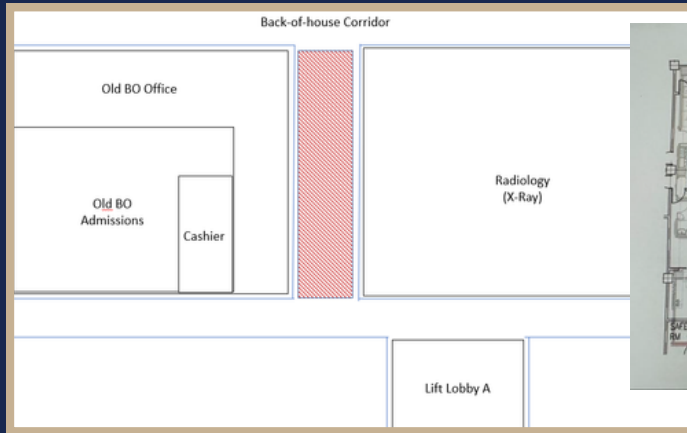


Perspective for MEMC Level 2

# CORRIDOR WORKS & TEMPORARY ARRANGEMENTS

With the completion of our new service corridors and lift cores, we are now able to redirect our patients and staff to commute our Hospital corridors via this new route. This offers us the opportunity to commence upgrading works of our old corridors.

We seek your continued patience as we progress with the upgrading works.

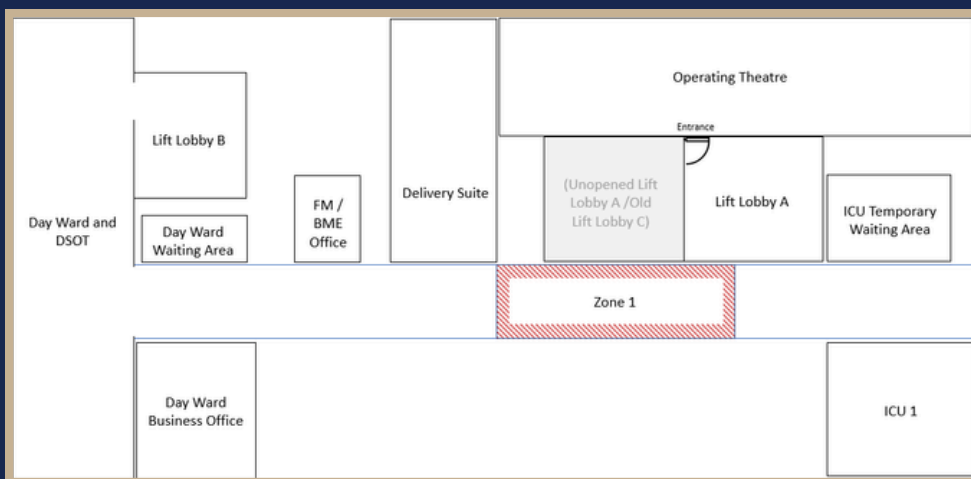


2

## Level 2 Corridor Closure by Zones

From 28 September: Existing L2 Back-of-House corridor will be closed for renovations

- Staff may access the back corridor via Radiology Zone 3 (Radiology X-Ray)
- Blue line shows future X-ray room wall that will take over part of the existing corridor (demarcated by orange line)



3

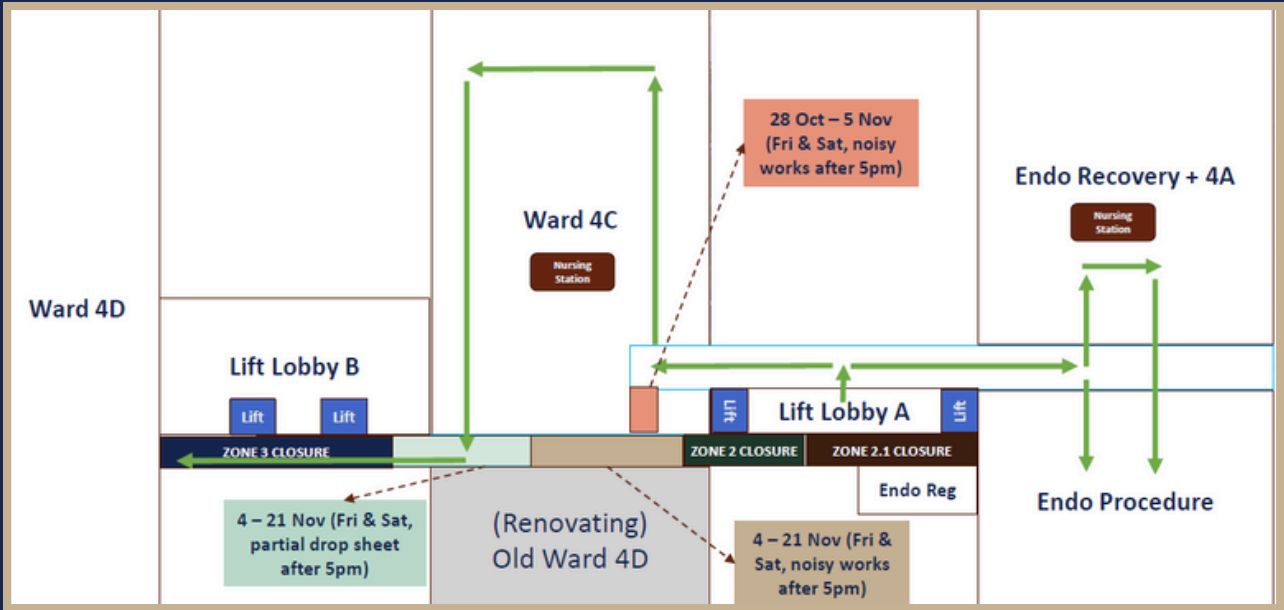
## Level 3 Corridor Closure by Zones

28 Oct – 31 Dec 2024 : Zone 1 Corridor between Delivery Suite and Lift Lobby A

Transfer Routes for Departments

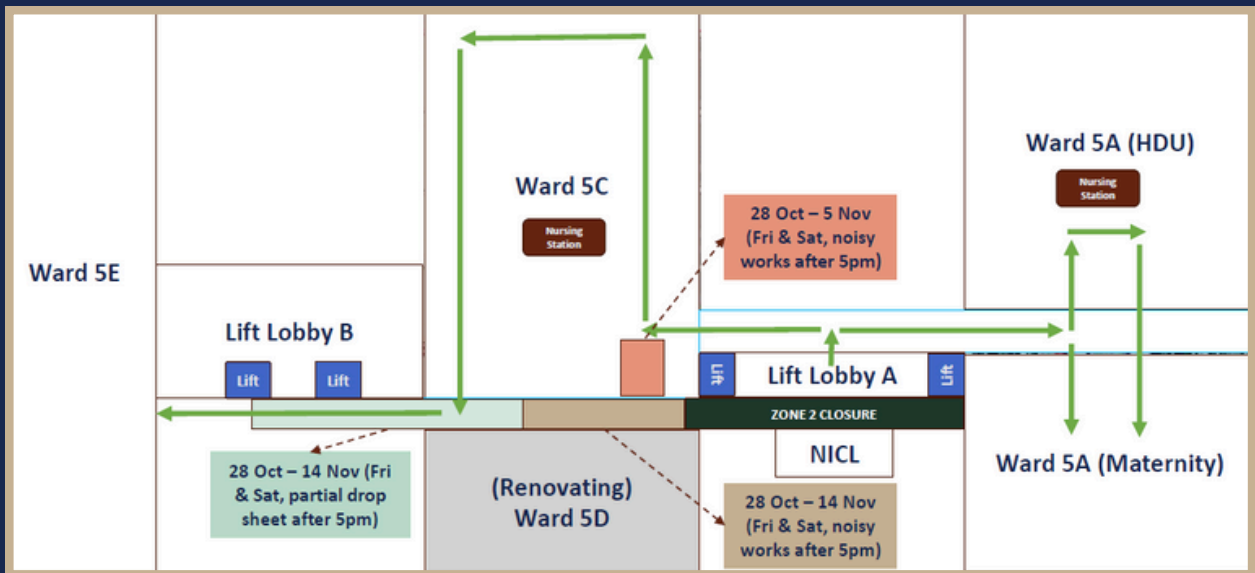
- Day Ward Elective Cases to MOT via Delivery Suite
- Code Blue Access to Delivery Suite / Day Ward via MOT \*To Gown Up
- Ward 4D and 5E transfer to MOT / ICU via Lift S1 and S2 (Lift Lobby A)
- Delivery Suite to Ward 5A (Maternity) via Lift F2 and F3 (Lift Lobby B)

# CORRIDOR WORKS & TEMPORARY ARRANGEMENTS



## Level 4 Corridor Closure by Zones

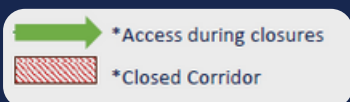
- 11 Nov to 25 Nov: (Zone 2 + Zone 2.1) Corridor between Ward 4C & Endo BO area is closed
- 17 Oct – 25 Nov 2024: Zone 2 Corridor between Ward 4C & Old Lift Lobby C
- 11 Nov – 14 Dec 2024: Zone 2.1 Corridor between Old Lift Lobby C & Endo BO Area
- 15 Dec – 31 Jan 2025: Zone 3 Corridor between Area to Lift Lobby B & Ward 4C



## Level 5 Corridor Closure by Zones

- 20 Nov – 5 Jan 2025: Zone 2 Corridor between Ward 5A & Ward 5C, Current NICL taken over

### Legend



Full Closures

Partial Closures

