

Renaissance

Issue 21
November 2024



THE HOME STRETCH

Mr Yong Yih Ming
Chief Operating Officer, IHH Healthcare Singapore
Chief Executive Officer, Mount Elizabeth Hospital

Dear Colleagues

It is with great pleasure and enthusiasm that I declare that we are officially in the Home Stretch of Project Renaissance. In the coming six months, we will have multiple new unveils for patient care, clinical and operational support, staff and public areas.

It has been a challenging past six months for everyone and I thank you for your continued patience and understanding.

In this edition, I will be updating on:

- (1) New Clinical Assets
- (2) New Patient Service Assets
- (3) New Operational Support and Staff Assets
- (4) New Public Area Assets



Mr Yong Yih Ming
Chief Operating Officer, IHH Healthcare Singapore
Chief Executive Officer, Mount Elizabeth Hospital

Project
Renaissance
Newsletter

TABLE OF CONTENTS

Introduction
• P.1

Clinical Assets
• P.2-4

Patient Service Assets
• P.5

Operational Support
& Staff Assets
• P.6-7

Public Area Assets
• P.8



For Authorised Circulation by Mount Elizabeth Hospital Only.

NEW CLINICAL ASSETS

Inpatient Wards

DECEMBER 2024

109 new inpatient beds will be handed back to us in December 2024 and we will operationalise them after our Ministry of Health (MOH) Licensing Audit in January 2025. These beds are in addition to the beds that we have unveiled in the new Ward 5A, 5A (HDU) and refreshed ICU 1 previously.

We will have a total of **236** inpatient beds operational in January 2025 and this was around the operational bed complement pre-Project Renaissance. We will start renovating Wards 4C, 5C and 6 thereafter as the final wards to be completed by June/July 2025 which will give us around 40 more inpatient beds.

Do note that as new wards are being operationalised, we are also transiting into their respective new names and room numbering nomenclatures.

I encourage all doctors to start planning your patient admissions from January 2025 onwards in anticipation of the opening of our new wards.

INPATIENT SERVICES & BEDS



WARD 10

LEVEL 10

14 Beds including 1 ISO room



WARD 9

LEVEL 09

14 Beds including 1 ISO room



WARD 8

LEVEL 08

14 Beds including 1 ISO room



WARD 7

LEVEL 07

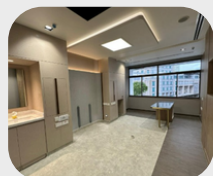
14 Beds including 2 Camelia rooms



WARD 5D

LEVEL 05

15 Beds including 1 ISO room & 1 VIP suite



WARD 4D

LEVEL 04

15 Beds including 1 ISO room



ICU 2

LEVEL 03

4 ICU beds from January 2025



NICU

LEVEL 03

7 NICU Beds including 1 ISO room



DELIVERY SUITE

LEVEL 03

6 Delivery Suites & 1 CTG room

New Clinical Assets

NUCLEAR MEDICINE



New Decay Tank -
Completed in 2022



Dr Ong's Site Visit during
Construction



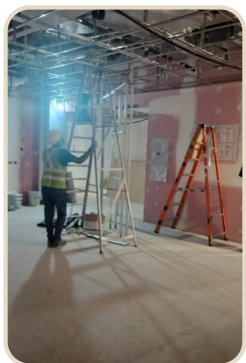
Near Completion

The new Nuclear Medicine Centre which is a corridor away from the current centre on Level 1 will also be handed over to us in December 2024.

This new centre will house 1 SPECT-CT and 1 PET-CT and we will be working towards the commissioning of these new equipment in the coming weeks.

The current centre will be taken back to be converted into a new arrival lobby. Its scheduled completion is in the second half of 2025.

RADIOLOGY ZONE 2



Radiology Zone 2 is part of the future greater integrated Radiology Complex, and will be handed over by February 2025.

This new zone will house 2 new CT machines and the new ESWL, NICL, Mammography, Ultrasound and X-ray units. This is adjacent to the already operational Angiography Suite that was launched in August 2024.

NEW PATIENT SERVICE ASSETS

International Patient Service (IPS) Centre



Our IPS Centre has been relocated to Level 2 of the Medical Centre, opposite the UOB ATM machines. It has re-commenced its onsite service as of 17 November 2024. This relocation brings the services closer to our doctors and patients.



LizWorld Patient App

The LizWorld in-room infotainment system was launched in Ward 5A in July 2024, and will be progressively introduced to all our new wards. The next evolution of the LizWorld Patient App will be launched by March 2025 and will integrate more services to the mobile devices of our patients to further enhance their in-flight experience.

Our new public toilets at Level 2 (near the Main Lobby) will also be completed in December 2024. These toilets will feature our new designs and modern amenities to better serve everyone.

Public Toilets at Level 2



NEW OPERATIONAL SUPPORT AND STAFF ASSETS

01. NEW KITCHEN & STAFF CAFETERIA

Our new kitchen will be handed back to us in December 2024. This means that our patients, staff and doctors will progressively be served food prepared by our own kitchen once again. We will take a phased approach by having all patient food be prepared onsite first from January 2025 and then progress to staff and doctor's food thereafter to allow for a proper transition back to routine operations.

Our staff will step back into their cosy staff cafeteria, as it incorporates a more vibrant design and skylight. It will serve as a proper space for interaction, relaxation and meals round-the-clock.



02 NEW BUILDING COMMAND CENTRE

Our new Building Command Centre will bring together our Security, Facility Management and Fire Command functions into one integrated space. Purposefully located next to the loading/unloading bay and in the middle of Level 1, it can seamlessly handle vendor pass exchanges and stay connected with the rest of the Hospital conveniently. It houses modern equipment that can also manage energy consumption in an integrated manner for better sustainability outcomes.

It was handed over to us in November 2024.



Support areas

03. NEW ENVIRONMENTAL SERVICES & BIOMEDICAL ENGINEERING DEPARTMENTS

These departments have been re-located on Level 1 for better synergy to service corridors and staff movements vis-à-vis the clinical areas upstairs. They will be handed over to us in December 2024.



04. NEW STAFF LOCKER ROOMS

Our new staff locker rooms have been re-located to opposite the new staff cafeteria at Level 1 for better synergy and convenience to all staff. These locker rooms will also feature new toilets, shower facilities and personal lockers. It will be ready in December 2024.



05. MORTUARY

The new mortuary will also be handed over to us in December 2024.



NEW PUBLIC AREA ASSETS



NEW GRAND LOBBY

Our new Grand Lobby will be unveiled by May 2025. This new lobby will incorporate a totally revamped layout, new furniture and a new innovative skylight lantern which would be a new iconic landmark for the hospital. We will also welcome back our Guan Gong mural and the Ming Dynasty Vase will also have its permanent placement at the main lobby.



NEW MEDICAL CENTRE DROP-OFF

Our new Medical Centre Drop-Off point will be unveiled by March 2025. This new drop-off point will feature a totally new design that is aligned with the greater design concept of the new hospital. It will also be integrated with the new sheltered linkway to Lucky Plaza.



NEW DOCTORS' DIRECTORY AT MEDICAL CENTRE

The MCST Council has approved the refresher of the Medical Centre doctors' directory. The new directory will boast a brand new design with digital panels for better user experiences. The new directory will also blend in with the greater design concept of Project Renaissance and will be completed within Q125

COMING SOON