

Renaissance

Issue 24
February 2025



WHAT'S NEXT?

Mr Yong Yih Ming
Chief Operating Officer, IHH Healthcare Singapore
Chief Executive Officer, Mount Elizabeth Hospital

Dear Colleagues

In the last edition of Renaissance, we revisited the 50 assets unveiled over the past 25 months.

In this edition, I'll provide an overview of the remaining major assets to be unveiled in the Home Stretch of Project Renaissance:

- (1) New Lifts & Lift Lobbies
- (2) New Drop-Off Point at Lobby B
- (3) New Medical Centre Drop-Off Point
- (4) New Grand Lobby & Sky Atrium
- (5) New Clinical & Support Assets



Mr Yong Yih Ming
Chief Operating Officer, IHH Healthcare Singapore
Chief Executive Officer, Mount Elizabeth Hospital

Project
Renaissance
Newsletter

TABLE OF CONTENTS

Introduction
• P.1

New Lift & Lobbies
• P.2

New Drop Off
• P.3

New Grand Lobby &
Sky Atrium
• P.4

New Clinical &
Support Assets
• P.5



Lifts

NEW LIFTS & LIFT LOBBIES

As part of Project Renaissance, we are adding 2 new lifts to the hospital. You may have noticed that all previous lift shafts have been demolished, and new shafts have been constructed in a completely reconfigured layout to streamline public and service movements. The new lifts are faster (by 0.5 to 1 second per floor) and more spacious than before. By the end of Project Renaissance, the hospital and medical centres will have a total of 26 lifts, up from the previous 24.

14 Lifts



Hospital

- **2 Visitor Lifts** at Grand Lobby Levels 1 to 5 (May 2025)
- **3 Visitor Lifts** at Block C from Levels 2 to 10 (by Q4 2025)
- **2 Visitor Lifts** from New Lobby B Level 1 to 2 (by Q4 2025)
- **2 Patient Lifts** at Block B from Level 1 to 10 (Operational since Dec 2023)
- **2 Patient Lifts** at Block C from Level 1 to 5 (Operational since Jun 2024)
- **1 Service Lift** at Block C, L1-L5 (by Q4 2025)
- **1 Dirty Utility Lift** at Blk B Level 1 to 10 (by Q4 2025)
- **1 Dirty Utility Lift** at Blk C Level 1 to 5 (by Q4 2025)

12 Lifts



Medical Centre

- **3 Visitor Lifts** (Lifts A, B, C) Full Replacement of existing lifts. Includes refurbishment to the wall tiles of the affected lift lobbies with lift landings, and floor finishes.



Installation Schedule

Lift A: 21 Jul 2025 till 19 Oct 2025

Lift B: 20 Oct 2025 till 18 Jan 2026

Lift C: 19 Jan 2026 till 30 Apr 2026

- **8 Visitor Lifts** – scheduled for full replacement from 2026
- **1 Goods Lift** (Operational)

DROP-OFF POINT

HOSPITAL & MEDICAL CENTRE

Medical Centre

The new medical centre drop-off point is in its final phases of construction and is on track to be fully operational by end of April 2025 and integrated with the new LTA sheltered walkway to Lucky Plaza.



Structure Constructed, with Glass roof installation and M&E Services schedule in March 2025



Hospital New Lobby B Drop Off Point at Level 1

The new Drop-Off point at Lobby B is located at the former Nuclear Medicine site and will feature two new public lifts (Access between Level 1 & 2), landing in front of the outpatient pharmacy on Level 2. Construction has commenced in phases, alongside preliminary carpark exit works, starting in February 2025

This new public asset is expected to be operational by September 2025.



GRAND LOBBY

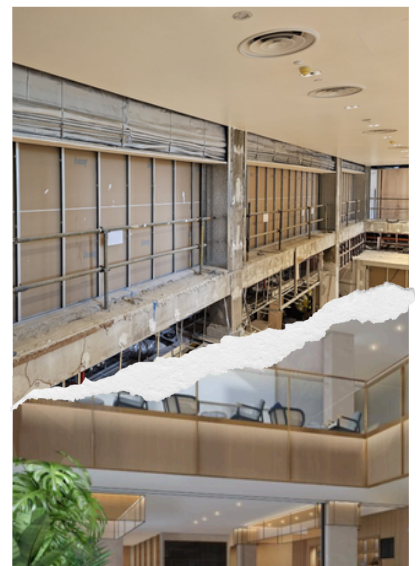
The new Grand Lobby and Sky Atrium are approaching completion and are set to be unveiled in May 2025. Integration with the new Business Office will occur in September 2025, followed by the Urgent Care Centre in November 2025.



CONSTRUCTION



Guan Gong Mural Protection & Future Sky Atrium



Level 3 Waiting Area

PROJECT TIMELINE

The remaining assets and their estimated operational timeframes are as follow:



End