

# Renaissance

Issue 05  
April 2023

Dear Colleagues,

## CLINICAL SUPPORT

You would have noticed construction hoardings across the Hospital by now. These hoarded sites represent the first areas to undergo structural upgrading and renovation in the upcoming months.

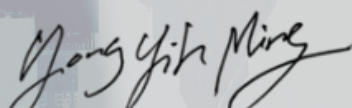
During this period, it is important for us to ensure our continuity of clinical and support services for our Doctors, Staff and Patients. We also wish to re-assure you that during this period of time, the availability of operational beds and surgery assets will only be marginally impacted.

In this edition of Renaissance, I'll provide insights on these area:

(1) Mitigation Measures during the renovation for:

- Patient Safety
- Infection Control
- General Accessibility & Movement
- Noise & Vibration

(2) Reason and future plan for current hoarding site



Mr Yong Yih Ming  
Chief Executive Officer  
Mount Elizabeth Hospital

## Project Renaissance Newsletter

### TABLE OF CONTENTS

---

Introduction • P.1

---

Mitigation measures • P.2

---

Noise & Vibration • P.3

---

Infection Control • P.4

---

Hoarding Plans & Uses •  
P.5-7



# MITIGATION MEASURES



## Patient Safety

Please be assured that prior to the erection of hoardings, proper site evaluations, measurements and tests are conducted at patient care areas (e.g. wards, endoscopy, ICU 1, etc) with our Consultants, Main Contractor, MEH Nursing & Ops Teams, and Doctors (when required).

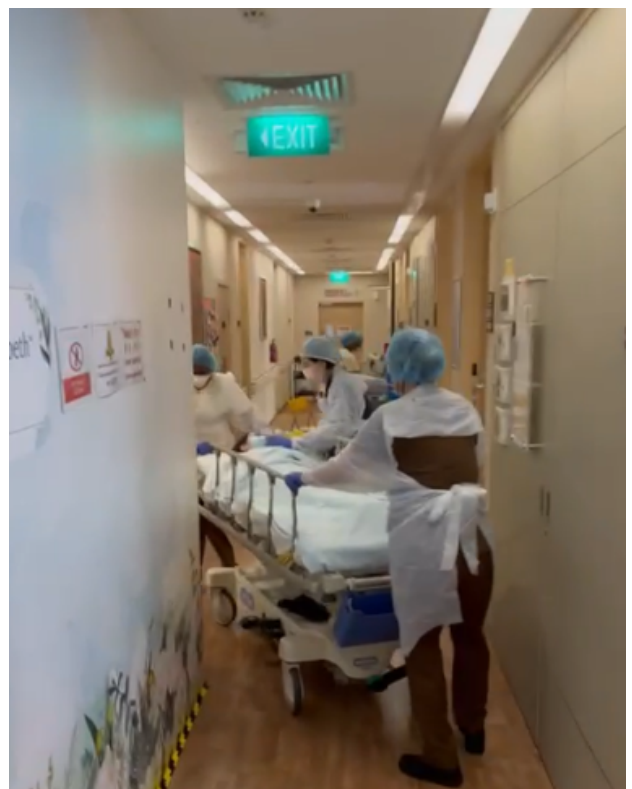
After the hoardings are erected, extensive scenario simulations and fresh Code Blue drills are carried out. This is done for every site undergoing renovation.

Continuous daily monitoring is conducted to further ensure that all works done adhere and conform to the required standards.

## Accessibility & Circulation

We seek your continued patience, and understanding, during this period for the inconveniences to your general movement, lift accesses and parking of your vehicle.

We assure you that these inconveniences are temporary.





# NOISE AND VIBRATION

Related Concerns

Noise and vibration are the hardest to mitigate during any upgrading works. We take guidance from the Building and Construction Authority (BCA) and National Environment Agency (NEA) to work with our Consultant and Main Contractor in ensuring the noisy works done are within acceptable range.

The heavy works are only allowed by law for a live building within stipulated hours;

Based on NEA guidelines on Construction Noise Control, the Maximum permissible noise levels for construction work at hospital building is;

Mondays to Saturdays, between 7am - 7pm is 60 dBA (Leq\*12hrs).

\*reckoned as the equivalent continuous noise level over the specified period, i.e. 5mins, 1hr or 12hrs.



Noise Meter Installed

Vibration levels due to construction, vibration measurements of under 3 mm/s for sensitive buildings such as hospitals in order not to cause discomfort and probable damage to structures.

Noise & Vibration Monitoring and Instrumentation Systems are placed at critical area within the facilities and adjacent neighbouring building, in order to efficiently control and monitor the noise and vibration generated during construction.

As a start, we have prepared inpatient kits for patients and also have ear muffs on standby for patients who may need them.

## Ear Plugs Set available

Ear Plugs Set placed beside patient bed for inpatients. Available for all outpatients upon request.



## Earmuffs available

Patients have the option to request for earmuffs which help further reduction of noise. Please wear this in addition to your earplugs.



**We seek your immense patience and understanding as the noisy works commence. In advance, we would also like to apologise that we will not be able to halt the construction works.**

# INFECTION CONTROL

Related Concerns

As the upgrading works are done within a live healthcare facility, it is important for us to ensure, and monitor, infection control aspects vigilantly. Taking guidance from the Ministry of Health (MOH), National Environment Agency (NEA), World Health Organisation (WHO), IHH Singapore and MEH Infection Control teams and Dr Asok Kurup, we work closely with our Consultants and Main Contractor to ensure we have taken appropriate infection control measures.

Pre-Construction Risk Assessments (PCRA) and Infection Control Risk Assessments (ICRA) are carried out in advance to anticipate potential hazards that may compromise patient care, treatment services, and staff safety. PCRA/ICRA cover various aspects; including fire safety, air quality, infection control, emergency procedures, and dust mitigation, to ensure that these risks are identified and addressed proactively.

## Measures in Place

- Full Height hoarding
- Sealed air vents and Isolated HVAC system
- Complete all critical barriers
- Maintain negative air pressure within work site utilising HEPA Filter



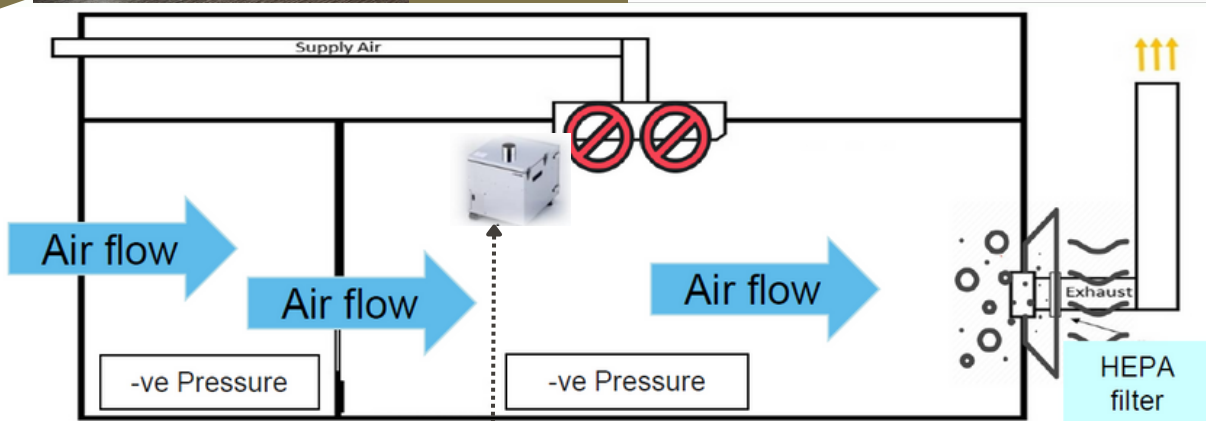
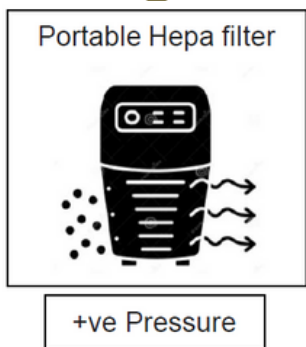
Precaution level identified as high to highest risk categorized in Group III/IV

### Class III

- Main negative pressure within construction zone by using portable HEPA equipped filtration units or other methods
- Ensure ventilation system is functioning properly and cleaned if contaminated by soil or dust after construction or renovation is over

### Class IV

- Construct Anteroom
  - ✓ Workers remove overalls each time they leave work site
  - ✓ Change shoe covers
  - ✓ Wet mop room daily



Patient care area

Anteroom

Work site

“Ante Area” for negative pressure in relation to the construction zone in order to contain dust generated, and prevent construction dust from contaminating “LIVE” (Patient Care) areas.

Industrial dust collectors to mitigate dust generated from construction activities





# THE FUTURE

# HOARDINGS



**Tips to Mitigate Changes:**

-  Encourage use of Lift Lobby C for L1 – 5 whenever possible
-  Increase your step count by taking stairs as an alternative

## LOBBY B - LIFTS J, K & L

## LOBBY C - LIFTS Q, R (expected Hoarding on 11 July 2023)

- We will overhaul the current lift core and introduce new lift accesses to segregate between public and service corridors in future
- Dedicated clean and dirty routes to ensure strict infection control compliance
- Additional 4 New lifts from current 10 lifts after Project R, to ease human congestion and reduce wait time.
- Larger lift capacity for patient transfer

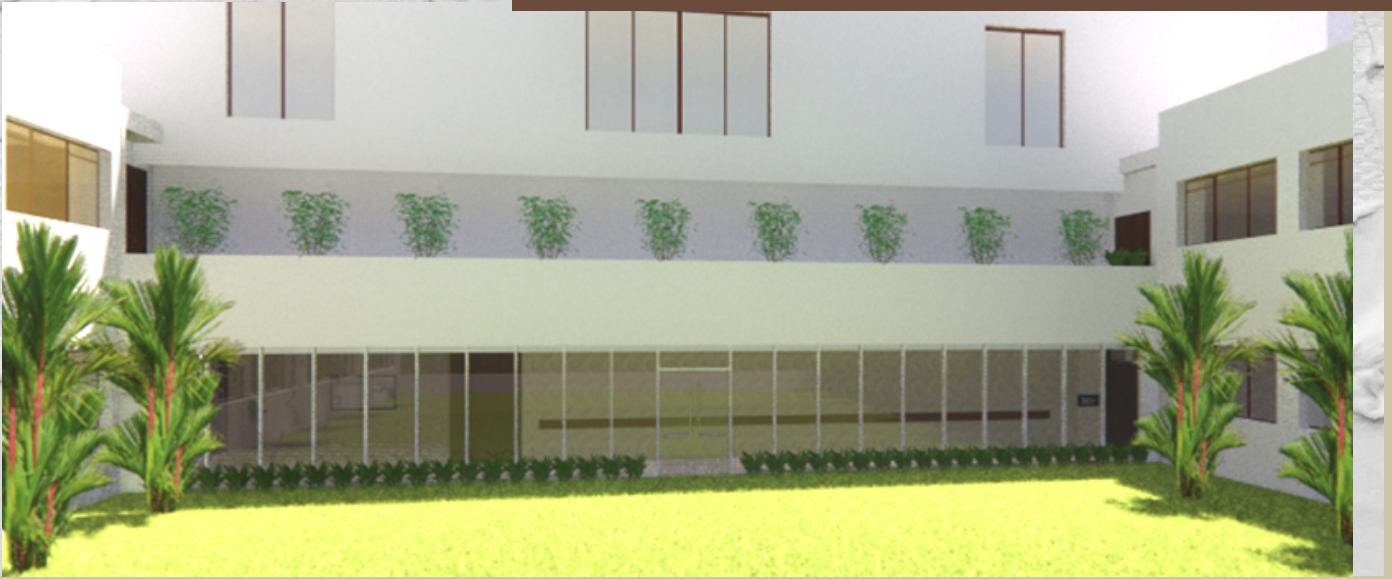


### LIFT UPDATES

		LIFT LOBBY B					LIFT LOBBY C						
		J	K	L	M	N	O	P	Q	R			
Serving Level effective from 10 April 2023													
L E V E L	10	x	x	x			x	x	x	x		10	
	9	x	x	x			x	x	x	x		9	
	8	x	x	x			x	x	x	x		8	
	7	x	x	x			x	x	x	x		7	
	6	x	x	x			x	x	x	x		6	
	5	x	x	x								5	
	4	x	x	x								4	
	3	x	x	x								3	
	2	x	x	x								2	
	1	x	x	x								1	

	0600 - 0700	0700 - 0800	0800 - 0900	0900 - 1000	1000 - 1100	1100 - 1200	1200 - 1300	1300 - 1400	1400 - 1500	1500 - 1600	1600 - 1700	1700 - 1800	1800 - 1900	1900 - 2000	2000 - 2100	2100 - 0600	
<b>LIFT LOBBY B</b>	Radiology (Portering of Patients & Move Radiology Equipment)																
	Wards (Medical Emergencies / Patient Transfer)																
	Endo / DW Peak		FO Admission			FO Discharge						FNB (Lift M)			FNB (Lift M)		
			FNB (Lift M) 10 min			FNB (Lift M) 10 min			FNB (Lift M) 10 min			FNB (Lift M) 10 min			FNB (Lift M) 10 min		
ES (Amenities)																	
<b>LIFT LOBBY C</b>	Radiology (Portering of Patients & Move Radiology Equipment)																
	Wards (Medical Emergencies / Patient Transfer)																
	Pharmacy (Pyxis)																
	Endo / DW Peak		FO Admission			FO Discharge						FNB (Lift P)			FNB (Lift P)		
		FNB (Lift P)			FNB (Lift P)			FNB (Lift P)			FNB (Lift P)			FNB (Lift P)			
ES (Amenities)																	
<b>Service Lift (Firemen's Lift)</b>	Other MMD Delivery																
	ES (DIRTY)		ES (CLEAN) Sanitisation: 0700 - 0715			ES (DIRTY)			ES (CLEAN) - 2pm - 5.30pm Sanitisation: 1400 - 1415			ES (DIRTY) - 5.30pm - 9pm			ES (CLEAN) Sanitisation: 2100 - 0600		
	Pharmacy (Pyxis)																

# NEW LINKWAY



## OLD DELIFRANCE SITE & GARDEN AT LEVEL 2

Access to level 2 garden is closed to make way for future new linkway connecting Block B and Block C.

Segregating Public & Inpatient flow by having a new dedicated Transfer corridor.





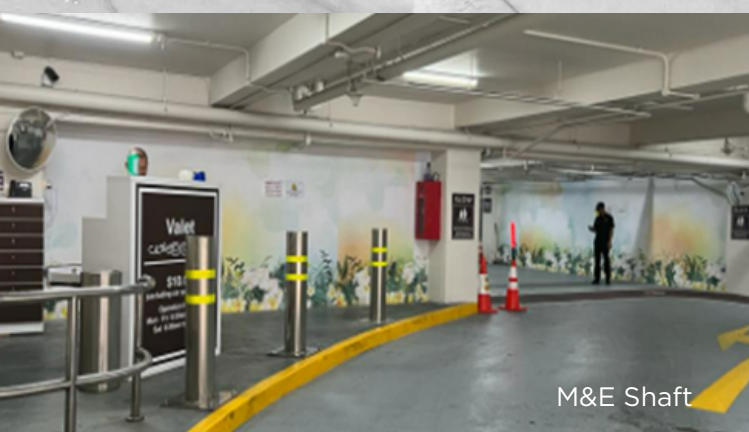
Ward Renovation



Ward Areas near Lift Lobby



Staircase B2



M&E Shaft



Bunker

# WARDS

## 5B

For our ward renovation, we are

- Standardising wards layout
- Incorporating improved workflow
- Enhancing infection control measures

## OTHER WARDS AT BLOCK B

Construction at ward areas behind lifts J, K & L are for us to comply to the latest fire safety regulations,

- Future fire escape bed lifts and protected smoke stop lobbies
- Strengthening the core structure of staircase B2

# CARPARKS

## CARPARK LEVELS 1A AND 1B

Behind our carpark hoardings, we will be constructing

- M&E Shaft for infrastructure upgrade
- Bunker to treat radioactive waste from Nuclear Medicine and future patient rooms dedicated for radioactive therapy.